



ARCH CONSULTANTS LTD 2015 YEAR IN REVIEW



5

SERVICE OFFERINGS

- Master Planning
- Project Management
- Facility Assessments
- Construction Consulting
- Facilities Management Support

175,000



MILES FLOWN TO MEETINGS AND JOB SITES AROUND THE NATION

3

SPEAKING ENGAGEMENTS

- LeadingAge IL Annual Meeting
- TheWorxHub User Conference 2015
- ULI Developer Showcase

14

CONFERENCES ATTENDED

1

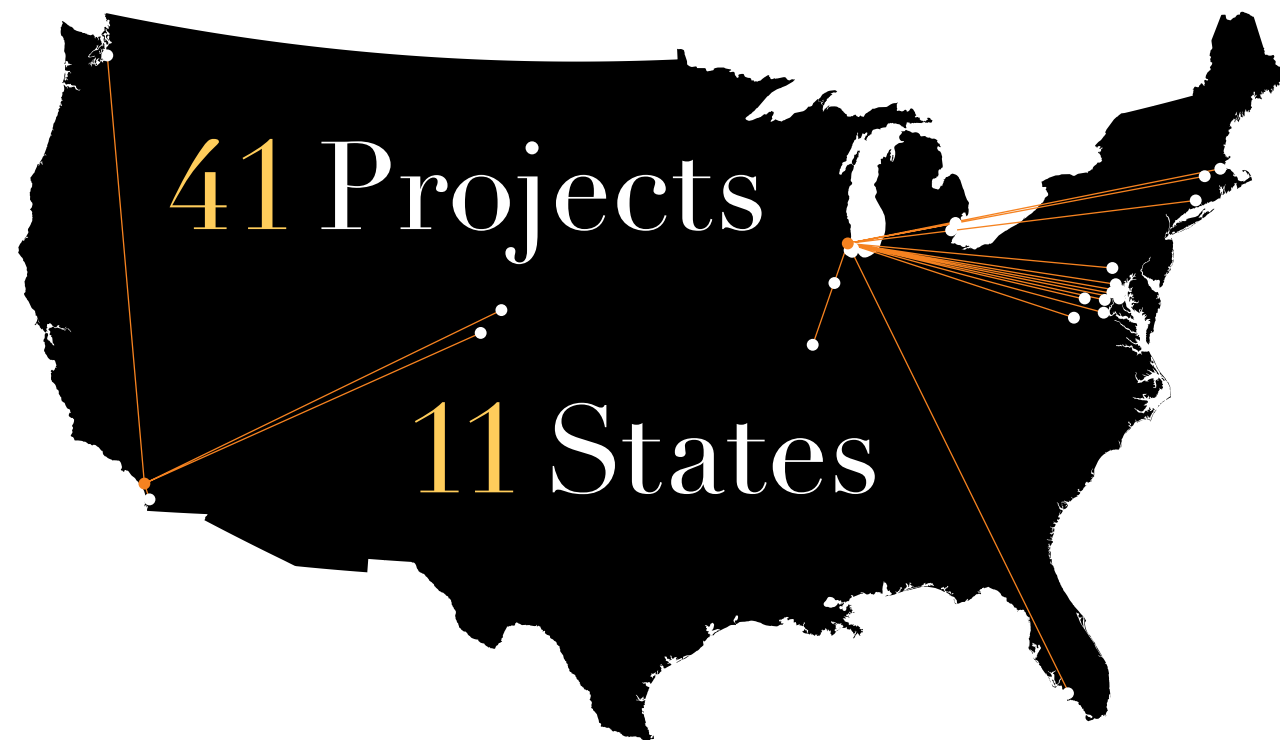
NEW OFFICE

2

NEW TEAM MEMBERS

13

NEW CLIENTS



\$1 Billion

OF TOTAL PROJECT COSTS IN PLANNING OR CONSTRUCTION

Reflecting on our journey in 2015, ARCH Consultants saw significant growth in our client roster, project load, and internal operations. As we close out the year, we are pleased to provide selected highlights of completed projects and work in progress.

This year ARCH managed 41 projects in 11 states and gained 13 new clients. We look forward to building on these relationships and to forming new partnerships.

Our national consulting practice opened a new office in San Diego, California to service the Western region more effectively. We also added to our team of professionals two associates who share our continued commitment to unwavering advocacy for our Owners' interests. Together we will continue to build on ARCH's reputation as a trusted partner to ensure operational program expectations and building goals are met for every client and project.

Our capital project managers maintain the highest standards of service and employ proven delivery methods for planning and construction oversight. This year they facilitated three educational sessions for industry leaders and associations to share our processes for repositioning and creating new buildings.

As we approach our 15th anniversary, ARCH will continue to guide organizations from vision to occupancy—and beyond. We will continue to manage Owners' capital assets with the goal of enhancing project delivery methods for efficient, cost-effective Living, Learning, Healing, and Civic environments that fulfill their objectives and enhance the lives of their occupants.



Frank R. Muraca, AIA, LEED AP, CSI
President

The Clare | Renovations

The Clare, located in downtown Chicago, Illinois, is in the process of renovating common spaces throughout the existing high-rise senior living community. ARCH is managing all of the renovation projects for the Owner, Senior Care Development.

Renovation was completed in Spring for the 21st floor Discovery Center, where marketing staff meet with prospective residents. Reconfiguring an existing unit allowed for the addition of two offices and a lounge area with powder room and support space.

In December the project team finished a complete renovation of the ground floor lobby. An expanded entrance, an additional entrance purposely built for the healthcare center, a new mailroom, and additional concierge services relocated from the upper floors provide a new, welcoming experience for all residents.

On the 53rd floor a new serving kitchen and event space, also completed in December, offers views across the Chicago skyline and an exciting space unique to the Clare.

Ongoing work includes the new Bistro on the 9th floor, which will expand the current space from a small self-service area to a full-service dining room for up to 50 residents and guests. The Bistro includes new al fresco seating overlooking the heart of downtown Chicago.

“ARCH has added value at every step of the development process, from assisting in the hiring of key team members to helping us make design and operating decisions. They bring a constant focus on achieving both a quality end product and meeting the project’s financial objectives.”

Denise deFiebre, Senior Vice President, Acquisitions
Senior Care Development



The Village at Orchard Ridge | Phase II

The second phase of development is currently underway at The Village at Orchard Ridge, a National Lutheran Communities & Services community in Winchester, Virginia, following the successful development and fill-up of Phase I managed by ARCH.

The Phase II project consists of a new dining room, a wellness center, a healthcare building addition, a rental apartment wing addition, and a new independent living apartment building. The wellness center has an indoor pool, an art studio, a multi-purpose room, and fitness and physical

therapy rooms. The healthcare, rental, and independent living additions bring new units and associated support space to the community.

ARCH assisted with the master planning process on campus and continues to provide complete capital project management services including project management and construction consulting. ARCH also provides facilities management support on campus to enhance the efficiency of facilities and housekeeping staff.



“In 2011, National Lutheran Communities & Services was beginning several significant projects. Given the level of risk and exposure to our organization, we required additional resources to plan, monitor and execute our growth efforts. ARCH has provided those resources and their involvement has been of great value.”

Lawrence R. Bradshaw, CEO,
National Lutheran
Communities & Services



Covenant Village of Northbrook | Evergreen

Evergreen is a \$22 million, 113,000 sq ft, three-story residential building with 56 independent living apartments, common amenities, a lounge, and an underground parking garage. Each floor has a variety of apartments ranging in size from one to three bedrooms. The exterior has a large veranda overlooking the campus pond. The new building, located in Northbrook, Illinois, is conveniently positioned in close proximity to the client's recently completed Town Center project, for which ARCH also provided Owner's Representative services.

ARCH helped the Owner, Covenant Retirement Communities, set the total project budget, coordinated with the marketing team for pre-sales efforts, and managed the development timeline throughout the course of the project. With ARCH's guidance, the project successfully received approval for a site plan amendment with the Village of Northbrook.



“ARCH was committed to our project, from the beginning with our local community approval process to the end with our general contractor’s punch list. They took pride in our project as part of our team.”

Neil Warnygora, Executive Director, Covenant Village of Northbrook

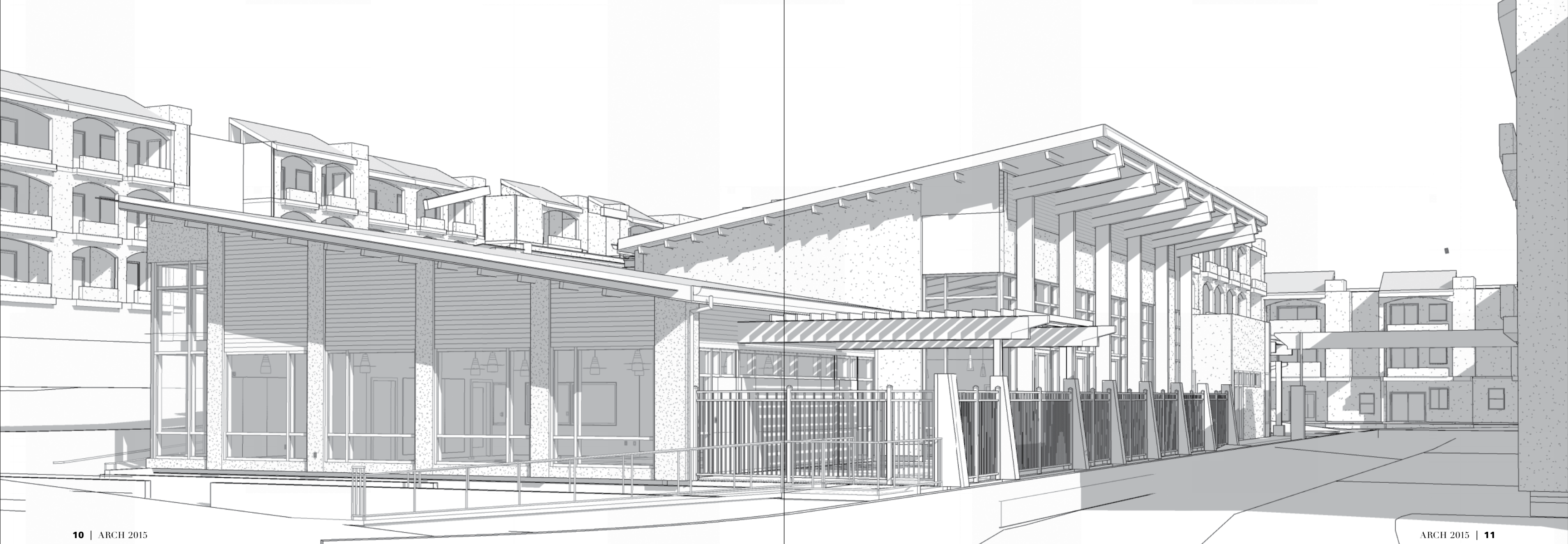
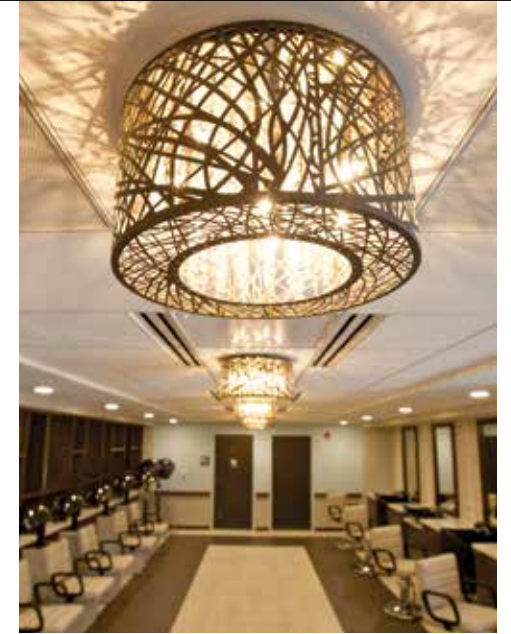
Casa de las Campanas

“Considering all the coordinating with engineers, designers, and the building department, it has given me great peace of mind knowing that ARCH was by our side throughout our project.”

Jay Riordan, Board Member,
Casa de las Campanas

Improvements and expansions to the existing Life Plan Community campus at Casa de las Campanas include the addition of a new 72-unit skilled nursing facility, a new fitness center and swimming pool, and bistro and salon updates. These initiatives will provide upgraded facilities and additional amenities for this 600-resident community in San Diego, California.

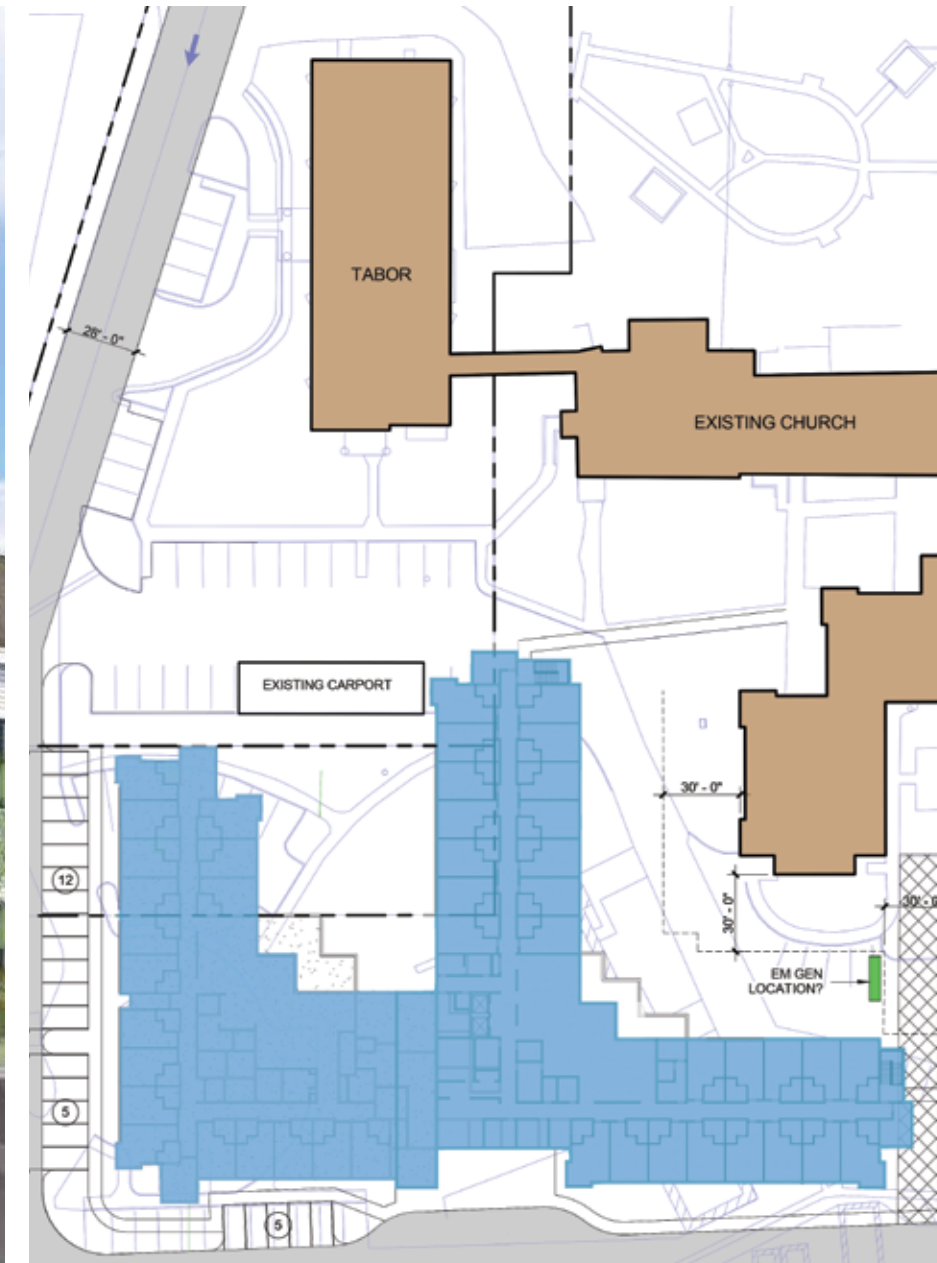
ARCH provides management and coordination of the project team’s efforts, financial oversight, and communication with all vested parties, including the development manager, community representatives, and the operating manager. ARCH is also involved in the entitlement process with city and other regulatory authorities.



Eben Ezer Lutheran Care Center

Eben Ezer Lutheran Care intends to construct a new building to enhance their existing campus in Brush, Colorado. The building is anticipated to have 74 resident units consisting of a single-story wing with 20 memory care units and a two-story wing with 54 assisted living units totaling approximately 50,000 sq ft. This project is the first step in a multi-phase master plan to revamp the community by improving and expanding lifestyle options for the residents.

ARCH is providing Owner's Representative services including project team assembly, capital budgeting, master scheduling, site due diligence, entitlements coordination, and management of the design and construction process. ARCH acts as a single point of contact and facilitates all components of the development process for this campus, which had not undergone recent repositioning. With successful completion, this project will provide a springboard for future phases of development.



“ARCH has been a critical player in the campus redevelopment of Eben Ezer Lutheran Care Center. Their commitment to our project, expertise, and attention to the details, all while working with a tight timeline, have allowed our organization a great sense of confidence moving through this project.”

Shelly M. Griffith, CEO
Eben Ezer Lutheran Care Center

The ARCH Team

We are...

Advocates who represent our clients' best interest in dealings with other organizations and individuals involved in the building process.

Stewards of our clients' construction resources, ensuring that time and money are well invested and carefully managed.

Partners who complement our clients' staff resources with our own specialized knowledge, experience, and leadership.

Collaborators who bring enthusiasm, commitment, and integrity to every project, infusing teams with our spirit of common purpose.

Responsible corporate citizens who align ourselves with our client's sustainability goals and always offer our expertise in sustainable building practice.

Ethical and committed, as a firm and as individuals, to the highest standards of conduct and respect for others in everything we do.



FRANK MURACA PRESIDENT

Founded ARCH Consultants and actively leads the ARCH team, overseeing the planning of all Senior environment projects.



JOHN PEACOCK SENIOR PROJECT MANAGER

Lays the framework for assessment, planning, and implementation of a wide array of projects and acts as a facilitator for programming, design, and budgeting.



SCOTT HABERKORN PROJECT MANAGER

Oversees design development, site preparation, construction, procurement services, and turnover activities for complex projects.



JUSTIN SAGER PROJECT MANAGER

Serves as lead consultant for the Western Region, applying his diverse experience in financial analysis, facility studies, capital budgeting, planning, design, and construction management.



KEITH SHEAHAN PROJECT MANAGER

Provides construction administration across all environments, drawing on extensive experience and diversified knowledge of building practices to oversee project design and specifications.



SANDY NOONAN ACCOUNTING MANAGER

Manages ARCH's accounting and finance functions including forecasting, billing, payables and receivables, and coordination of project accounting and construction-in-progress tracking.



BRITTANY VIPHAM COMMUNICATIONS MANAGER

Establishes organizational tools to effectively keep stakeholders up to date and coordinates all facilities management support services.



*We thank our clients and partners
for a successful 2015
and look forward to working with them for many more years.*

- Bethesda Rehab & Senior Care
- Broadmead
- Brookhaven at Lexington
- Casa de las Campanas
- Catholic Charities
- Cedarlake Village
- Christian Retirement Services
- The Clare
- Covenant Retirement Communities
- Covenant Shores
- Covenant Village of Cromwell
- Covenant Village of Northbrook
- The Danish Home of Chicago
- Eben Ezer Lutheran Life Care Center
- Hearthstone Communities
- Hunters Woods Fellowship House
- Lake Anne Fellowship House
- Lake Ridge Fellowship House
- Largo Landing Fellowship House
- The Legacy at North Augusta
- Meadows Mennonite Retirement Community
- Monarch Landing
- Mount Miguel Covenant Village
- National Lutheran Communities & Services
- The Overlook
- Plymouth Place Senior Living
- Presbyterian Villages of Michigan
- The Rivers Grosse Pointe
- Sedgebook
- Senior Care Development
- Sunny Vista Living Center
- Three Crowns Park
- The Village at Crystal Spring
- The Village of East Harbor
- The Village at Orchard Ridge
- The Village at Rockville
- The Village at Sprenkle Drive



ARCH CONSULTANTS LTD
250 PARKWAY DRIVE SUITE 350 LINCOLNSHIRE IL 60069
TOLL-FREE 888.692.4925 TEL 847.541.3220 FAX 847.541.3221
WWW.ARCHLTD.COM