



ARCH CONSULTANTS LTD 2016 YEAR IN REVIEW



6

SERVICE OFFERINGS

- Project Management
- Master Planning
- Facility Assessments
- Construction Consulting
- Facilities Management Support
- Development Advisory Support

300+



CONFERENCE CALLS HOSTED

2

SPEAKING ENGAGEMENTS

11

CONFERENCES ATTENDED

66

PROJECTS IN 11 STATES

10

AFFILIATIONS AND ASSOCIATIONS

2

NEW TEAM MEMBERS

6

NEW CLIENTS

ARCH FOUNDED

2002

LINCOLNSHIRE OFFICE OPENED

2003

FIRST ARTICLE PUBLISHED

2006

FIRST MULTI-MILLION DOLLAR PROJECT BUILT

2008

2010

MOVED TO NEW OFFICE

2011

3 PROJECTS FEATURED IN ENR TOP STARTS MIDWEST

2015

WEST COAST OFFICE OPENED

2017

15TH ANNIVERSARY

15 Years

OF SUCCESSFUL OWNER'S REPRESENTATION

Reflecting on our journey in 2016, ARCH Consultants saw significant growth in our project load and internal operations. As we close out the year, we are pleased to provide selected highlights of completed projects and work in progress.

This year ARCH managed 66 projects in 11 states and gained six new clients or partnering organizations. We presented two educational sessions for industry leaders and associations to share our thorough processes for repositioning and development. As affiliates and associates of 10 organizations, we attended 11 conferences, building our industry knowledge and expertise.

We added two seasoned associates to our firm who share our continued commitment to unwavering advocacy for our Owners' interests. Together we build on ARCH's reputation as a trusted partner to ensure that operational program expectations and building goals are met for every client and project.

Looking back over the years at our publications, project milestones, featured developments and office expansions, we are grateful for the colleagues and friends in Senior, Learning, Healing and Civic environments that have helped make ARCH so successful. We look forward to building on these relationships and forming new partnerships as we celebrate 15 years of successful Owner's Representation.

ARCH will continue to guide organizations from vision to occupancy—and beyond.



Frank R. Muraca, AIA, LEED AP, CSI
President

Mount Miguel Covenant Village | Town Center

The Mount Miguel Covenant Village campus, located in Spring Valley, California, completed Phase One of a new Town Center project. The dramatic mission-style 35,000 SF campus centerpiece for staff and residents contains administrative offices, a health clinic, and multiple dining, entertainment, social, fitness, and activity areas. The project enhances the campus amenity offerings and increases the vitality and desirability of the community.

ARCH provided Owner's Representative services during the construction phase, working to solidify scope, budget, and schedule along with construction monitoring, budget management, and project accounting efforts throughout the course of the project.



“ARCH provided us with critical financial, developmental, and technical support to guide us through the challenges of a very complex project. Their knowledge and expertise proved to be invaluable.”

Richard Miller, Executive Director,
Mount Miguel Covenant Village



Meadow Ridge | Renovations

“ARCH assisted in creating a master plan for the campus, ensuring our programmatic goals were achieved. They continue to guide the building process as we enter into design.”

Michelle Bettigole, Executive Director, Meadow Ridge

Meadow Ridge, a Senior Care Development Life Plan Community in Redding, Connecticut, is in the process of renovating an existing lounge into a new Bistro/Dining venue. The new Bistro will accommodate approximately 60 residents. The Bistro’s design accommodates large and small groups while retaining an intimate quality, and a new outdoor patio will offer extended outdoor dining opportunities. A fully equipped open kitchen with a revised menu will offer numerous choices for both residents and staff.

Simultaneously, additional renovations to various areas of their campus are underway including a new Discovery Center, resident health area, and reconfiguration of existing spaces for a formal dining hall. All projects are projected for completion in summer 2017.

ARCH is providing complete Owner’s Representative services beginning with program development, where our vast experience streamlined the Owner’s program definition and phasing of the project. Additional services for the project include design oversight and construction management.



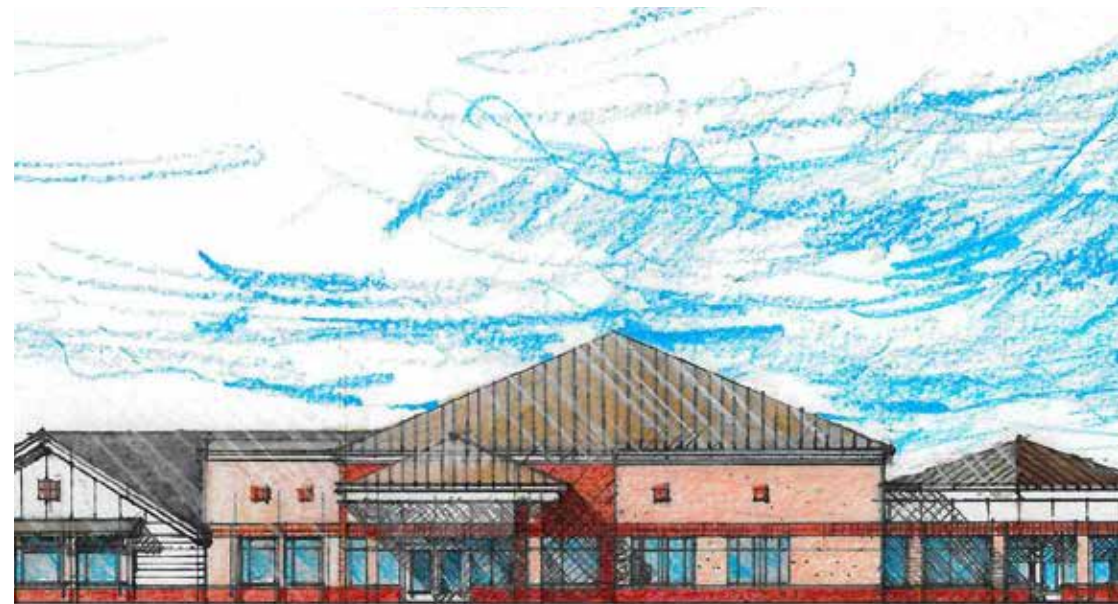
The Village of East Harbor | Repositioning

The Village of East Harbor, located in Chesterfield Township, Michigan, is a Presbyterian Villages of Michigan Life Plan Community that underwent a master planning process resulting in a phased repositioning plan to renovate existing facilities and expand resident units. Phase One includes an addition with 16 transitional care beds, a physical therapy area, and a dining venue, as well as renovation of the long-term care bed wings, dining venues in assisted living, corridors, and common areas. Phase Two includes 70 independent living units, 24 cottage homes, and renovation of the existing independent living units. Phase Three includes renovations to the existing independent living building. Completion of Phase One construction is projected for 2018.

ARCH provided development consulting services including a facility assessment to determine the condition of the existing building's infrastructure, zoning analysis, definition of project scope and objectives, conceptual construction opinion, initial construction management plan, and development of a total project budget and schedule, all of which were included in a development plan for implementation. Once implementation began, ARCH helped secure State of Michigan Certificate of Need and Michigan Financing Authority approvals.

“As Owner’s Representative, ARCH guided us through the planning process, assisting with the creation of a more dynamic master plan, securing necessary licensing and township entitlements, and reducing the overall project costs while maintaining our programmatic goals.”

Brian Carnaghi, Senior Vice President of Finance and Business Development, Presbyterian Villages of Michigan



Bethesda | Rehab & Senior Care

In fall 2016, Bethesda Rehab & Senior Care completed an expansion and renovation of their existing rehabilitation center located in Chicago, Illinois. The project included renovations to an existing skilled nursing wing for a new Rehabilitation unit, new office and therapy support areas, newly constructed physical therapy building and patient entrance, associated landscaping, and additional parking. ARCH provided project management and construction oversight, bringing our collective construction experience to mitigate potential costs and ensure construction was completed on time.



“It is so rewarding to see years of planning finally come to conclusion. ARCH played a significant role in making this project a reality for Bethesda. I could have never kept up with all the permissions, permits, approvals and paperwork. They kept things moving forward despite the insanely complex Chicago systems.”

Julie Boggess, CEO,
Bethesda Rehab & Senior Care

The Village at Orchard Ridge | Phase II

The second phase of development is complete at The Village at Orchard Ridge, a National Lutheran Community in Winchester, Virginia, which followed the successful development and resident fill-up of Phase I managed by ARCH.

The Phase II project consisted of a new dining room, a wellness center, a health care building addition, and 103 apartments in two buildings. The wellness center (known as the Engage Center) has an indoor pool, an art studio, multi-purpose room, and fitness and physical therapy rooms. The health care addition and apartment buildings bring new units

and associated support space to the community. Managing a complex phased opening, ARCH's seamless communication with National Lutheran Communities & Services ensured a smooth transition process.

ARCH assisted with the original master planning process on campus and continued to provide complete capital project management and construction consulting services. ARCH also provided facilities management support on campus to improve the efficiency of the in-house facilities and housekeeping staff.



“ARCH has worked with us on The Village at Orchard Ridge for five years now. As one can imagine, the level of risk and exposure on an initiative of this size is considerable. Throughout Phase I and Phase II, we have seen their unwavering commitment to the project. Their involvement continues to be of great value to our organization.”

Lawrence Bradshaw, President and CEO, National Lutheran Communities & Services

The ARCH Team

We are...

Advocates who represent our clients' best interest in dealings with other organizations and individuals involved in the building process.

Stewards of our clients' construction resources, ensuring that time and money are well invested and carefully managed.

Partners who complement our clients' in-house staff resources with our own specialized knowledge, experience, and leadership.

Collaborators who bring enthusiasm, commitment, and integrity to every project, infusing teams with our spirit of common purpose.

Responsible corporate citizens who align ourselves with our client's sustainability goals and always offer our expertise in sustainable building practice.

Ethical and committed, as a firm and as individuals, to the highest standards of conduct and respect for others in everything we do.

FRANK MURACA
PRESIDENT

Founded ARCH Consultants and oversees the planning of all Senior environment projects.

SANDY NOONAN
ACCOUNTING MANAGER

Manages ARCH's accounting and finance functions including forecasting, billing, and coordination of project accounting and construction-in-progress tracking.

JOHN PEACOCK
SENIOR PROJECT MANAGER

Lays the framework for project assessment and implementation, and acts as a facilitator for programming and design.

JIM BRODY
SENIOR PROJECT MANAGER

Guides ARCH's facilities management support services, applying his experience with technically complex new construction and redevelopment of existing buildings.

BRITTANY VIPHAM
COMMUNICATIONS MANAGER

Establishes organizational tools to effectively keep stakeholders up to date and coordinates ARCH's communication plans.

SCOTT HABERKORN
PROJECT MANAGER

Oversees design development, site preparation, construction, procurement services, and turnover activities for complex projects.

KEITH SHEAHAN
PROJECT MANAGER

Provides construction administration and facility studies, drawing on diversified knowledge of building practices to oversee project specifications.

JUSTIN SAGER
PROJECT MANAGER

Serves as lead consultant for the Western Region, applying his diverse experience in financial analysis, capital budgeting, and construction management.

MILISSA ROWELL
ADMINISTRATIVE ASSISTANT

Supports day-to-day operations, providing administrative functions and managing the front desk at ARCH headquarters.



*We thank our clients and partners
for a successful 2016
and look forward to working with them for many more years.*

- Altadena Library District
- Apostolic Christian Restmor
- Bethesda Rehab & Senior Care
- Broadmead
- Canterbury on the Lake
- Casa de las Campanas
- The Clare
- Covenant Place of Tulsa
- Covenant Retirement Communities
- Covenant Shores
- Covenant Village of Cromwell
- Covenant Village of Northbrook
- The Danish Home of Chicago
- Eben Ezer Lutheran Life Care Center
- Hillsboro Area Hospital
- Hunters Woods Fellowship House
- Lake Anne Fellowship House
- Lake Ridge Fellowship House
- Largo Landing Fellowship House
- The Legacy at North Augusta
- Meadow Ridge
- Meadows Mennonite Retirement Community
- Monarch Landing
- Mount Miguel Covenant Village
- National Lutheran Communities & Services
- The Overlook
- Plymouth Place Senior Living
- Presbyterian Villages of Michigan
- The Rivers Grosse Pointe
- Sedgebook
- Senior Care Development
- The Village at Crystal Spring
- The Village of East Harbor
- The Village at Orchard Ridge
- The Village at Rockville



ARCH CONSULTANTS LTD
250 PARKWAY DRIVE SUITE 350 LINCOLNSHIRE IL 60069
TOLL-FREE 888.692.4925 TEL 847.541.3220 FAX 847.541.3221
WWW.ARCHLTD.COM